



**624 Wellington Way  
Lexington,  
Kentucky 40503  
859-223-5694  
FAX 859-223-2607  
E-Mail: mseinc@mselex.com**

**Addendum No. 1  
Plans, Specifications and Contract Documents  
for  
The Seed Academy – Lake Cumberland  
Regional AgriTech Center  
Russell Springs, Kentucky**

**ADDENDUM NO. 1 - ISSUE DATE: 6-15-23**

The following additions, deletions, changes or revisions are issued herewith and become a part of the Project Documents. Addendum No. 1 consists of eight (8) 8.5x11 pages.

**General Note to Bidders:**

Item x – Clarification regarding Corridor ceilings that appear to have both open to above and ceiling tile as indicated on Finish Schedule on Sheet A-11. Corridors 101, 111 & 124 have adjacent areas with either type of ceiling. To clarify, refer to Sheet E-2 Lighting, which shows ceilings graphically.

Item 1 – Clarification regarding equipment that is not in contract, and being provided in the future by Others. Mechanical Electrical rough-in has been anticipated. This equipment includes:

Display Case at Lobby 101.

Stacking washer/dryer and Pet Washing station at Lab 117.

Paint Booth at Lab 119.

Walk-in Cooler, Ice Machine and Commercial Refrigerator at Lab 122.

Animal Stalls at Livestock 137.

Bleachers in Auditorium 136.

Living Wall on Elevation A/A-2.

**Revisions to Specifications**

Item 2 – Refer to 06400 Plastic Laminate Casework and Countertops, in Part 2 Quality Assurance, section A.1, add “Whitis Cabinets [www.whitiscabinets.com](http://www.whitiscabinets.com)” as an approved Manufacturer.

Item 3 – Refer to 08100 Metal Doors and Frames, Part 7.A, add De La Fontaine and MPI as approved Manufacturers.

Item 4 – Refer to 08211 Flush Wood Doors, Part 2.01, A.1, add Oshkosh as approved Manufacturer.

Item 5 – Refer to 08410 Aluminum Entrances and Windows, Part 2.07, delete YSIN clear matte finished, and add Bronze Anodized finish.

Item 6 – Refer to 08710 Door Hardware – add Door #20 to Hardware Set 10.

Item 7 – Refer to 08800 Glass and Glazing, Part 5.A, delete color, see elevations, and add solar grey.

Item 8 – Refer to 10650 Operable Partition, Part 2.1.A, add Moderco Inc. Signature 842 steel faced, trimless panel with 49 STC rating.

Item 9 – Refer to 13120 Steel Building Systems – Part 2.05 Roof Covering System, A. SSR with vertical style leg, 16”-18” wide.

### **Revisions to Civil Plan Sheets**

Item 10 – Refer to Sheets C-1 & C-2, add a connecting sidewalk (7’ wide by 18’ long) centered on Door 02 connecting Student Lounge patio to sidewalk at parking.

### **Revisions to Architectural Plan Sheets**

Item 11 – Refer to Sheets A-4 Section A, add typical note at foundation drain pipe: 6” perforated PVC with filter sleeve foundation pipe around foundation perimeter. Run to daylight where available or run to storm drainage piping.

Item 12 – Refer to Sheet A-8 Door Schedule, revise Doors #48 and #52 as follows:

DOOR SCHEDULE											SEE SPEC. SECTION 08710 FOR HARDWARE SETS
DOOR							FRAME				REMARKS
NO.	TYPE	MATERIAL	WIDTH	HEIGHT	THICK.		TYPE	HEAD	JAMB	SILL	
48	PR.	C	HM INSUL.	3'-0"	7'-0"	1 3/4"	2	G	H	J	
52	E	SCW		3'-0"	7'-0"	1 3/4"	4	W	X	----	

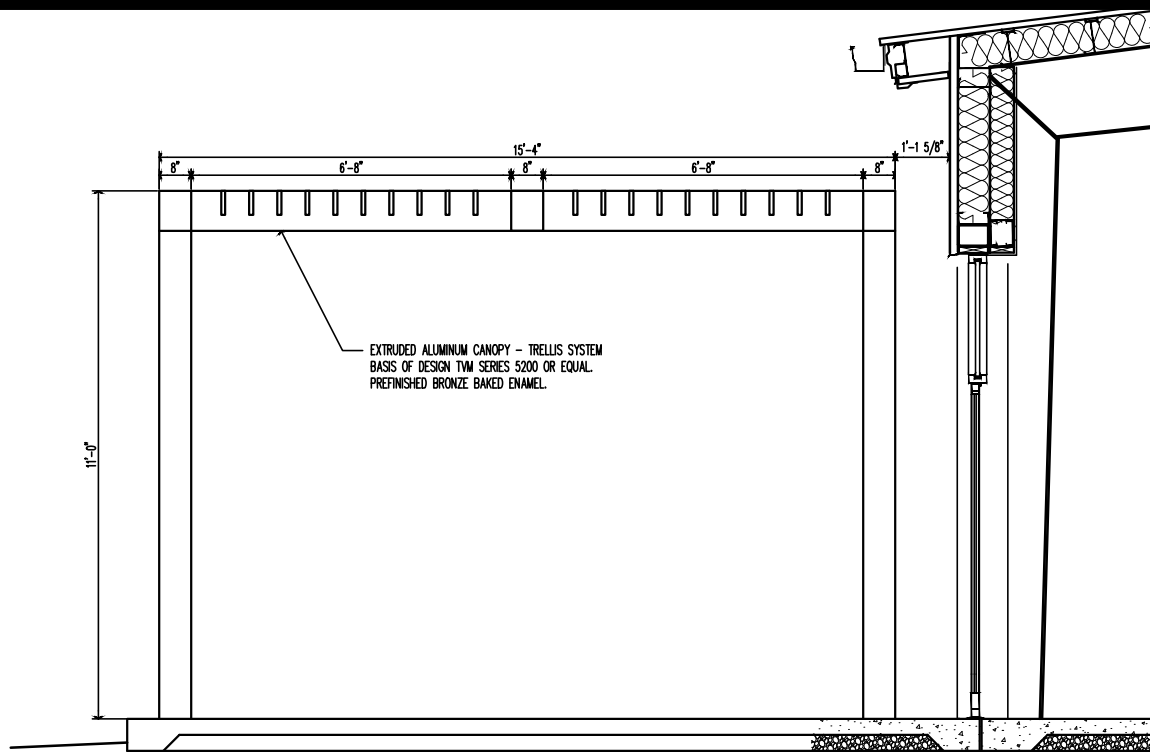
Item 13 – Refer to Sheet A-8 Door Schedule, revise remark for Doors #7 & #8 as follows: Provide finished metal horizontal sliding doors by Plyco Corp, or Equal. [www.plyco.com](http://www.plyco.com) 1-800-558-5895 1-1/2” double slide door package, size 12x12SDD in color charcoal.

Item 14 – Attached 8.5x11 sheets AD1.1 and AD1.2 shall be added to sheet A-6.

### **Revisions to Mechanical Electrical**

Item 15 – Refer to Mechanical Electrical Addendum #1 attached, 3 pages dated June 12, 2023 including 8.5x11 Drawing UM-1A, and Part 2, 1 page dated June 13, 2023.

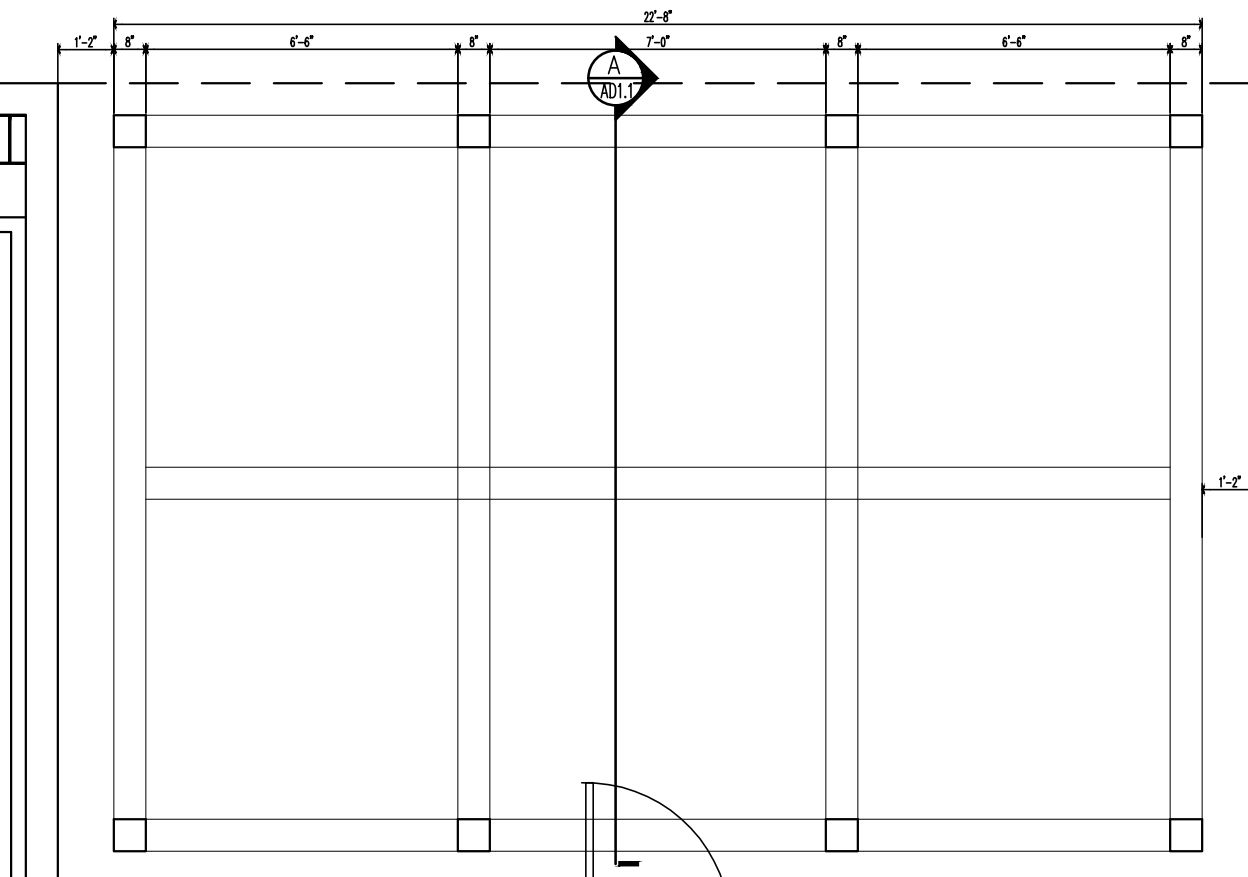
END OF ADDENDUM NO. 1



# TRELLIS SECTION

SCALE: 1/4" = 1' - 0"

A



**nsc**  
OF KENTUCKY, INC.

Engineers  
Architects  
Planners

624 Wellington Way  
Lexington, KY 40503  
www.mselex.com

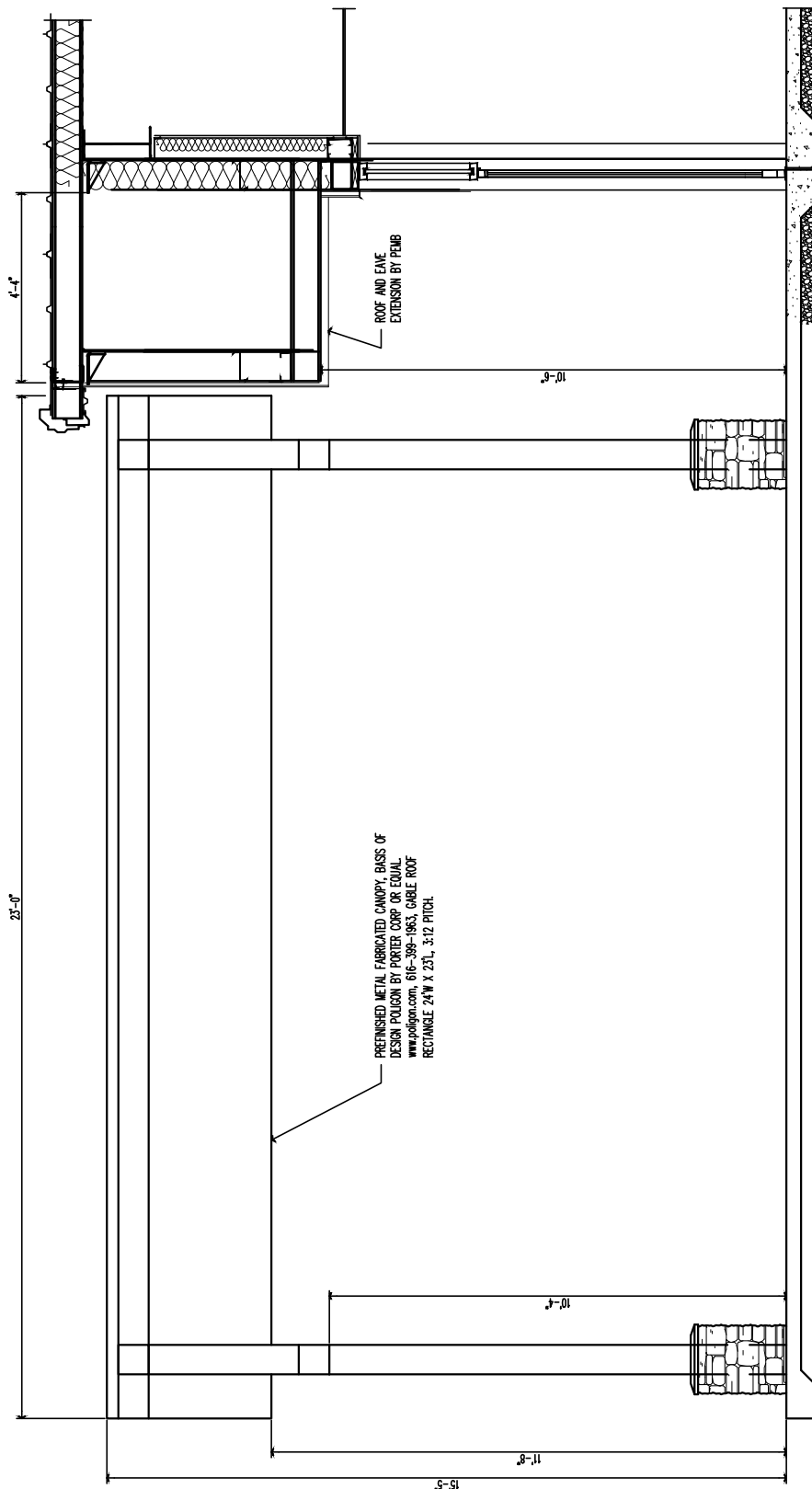
PHONE: (859)223-5694  
FAX: (859)223-2607

**The Seed Academy**  
Lake Cumberland Regional AgriTech Center  
Russell Springs, Kentucky

DRAWING NO.

AD1.1

SHEET OF



WALL SECTION  
SCALE: 1/4" = 1'-0"

**nsc**  
OF KENTUCKY, INC.

Engineers  
Architects  
Planners

624 Wellington Way  
Lexington, KY 40503  
[www.mselex.com](http://www.mselex.com)

PHONE: (859)223-5694  
FAX: (859)223-2607

# The Seed Academy

Lake Cumberland Regional AgriTech Center  
Russell Springs, Kentucky

DRAWING NO.

AD1.2

SHEET OF



## TECHNICAL HORIZONS PLLC

Industrial • Commercial • Institutional

501 Darby Creek, Ste #31 Lexington, KY  
859.263.5983

June 12, 2023

### **Addendum #1**

The Seed Academy  
Russell Springs, KY

#### **Plumbing Items:**

- P1.1 Under Alternate #1: Provide cleanout in sanitary main at edge of alternate scope (room 117) that is deep enough elevation to serve the two additional rooms (199 & 122) in the future.
- P1.2 Under Alternate #1: Water lines in room 117 shall be kept to the heated side of insulation.

#### **Mechanical Items:**

- M1.1 Camus Valiant is an acceptable manufacture of boilers, subject to the compliance of the specifications.
- M1.2 Under Alternate #1: The gas line to future make-up air unit shall be extended within 3'-0" of the exterior wall of Room 117.
- M1.3 Under Alternate #1: Refer to Sheet M-2; concerning work at end of Corridor 111.
  - a. The outside air supply duct to transition to a 26"x24" duct which is to cross over the 18" diameter exhaust duct past Room 139, and then to offset to the correct position after clearing Room 139 at which it needs to transition to a 28"x20" duct. The condenser water piping must offset around duct and over duct, to then drop as required into Room 139.
  - b. Exhaust duct to route to the correct position in the Corridor as designed.
  - c. In lieu of the chase being 4'-2 5/8" by 6'-0" inside clear, the chase is to be 5'-0" by 6'-0" inside clear. Coordinate chase size change with General Contractor.
  - d. Add another R-1 return grille in the lay-in ceiling of Corridor 111 outside of Women's Restroom.
  - e. Place a 14"x10" above ceiling transfer opening from Storage 116 to Corridor 111.
  - f. Return air grille R-3 at end of Corridor in the chase wall to be 28"x36" in lie of 28"x24".



## TECHNICAL HORIZONS PLLC

Industrial • Commercial • Institutional

501 Darby Creek, Ste #31 Lexington, KY  
859.263.5983

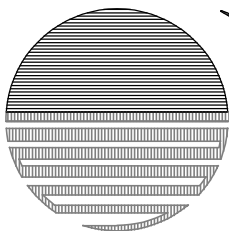
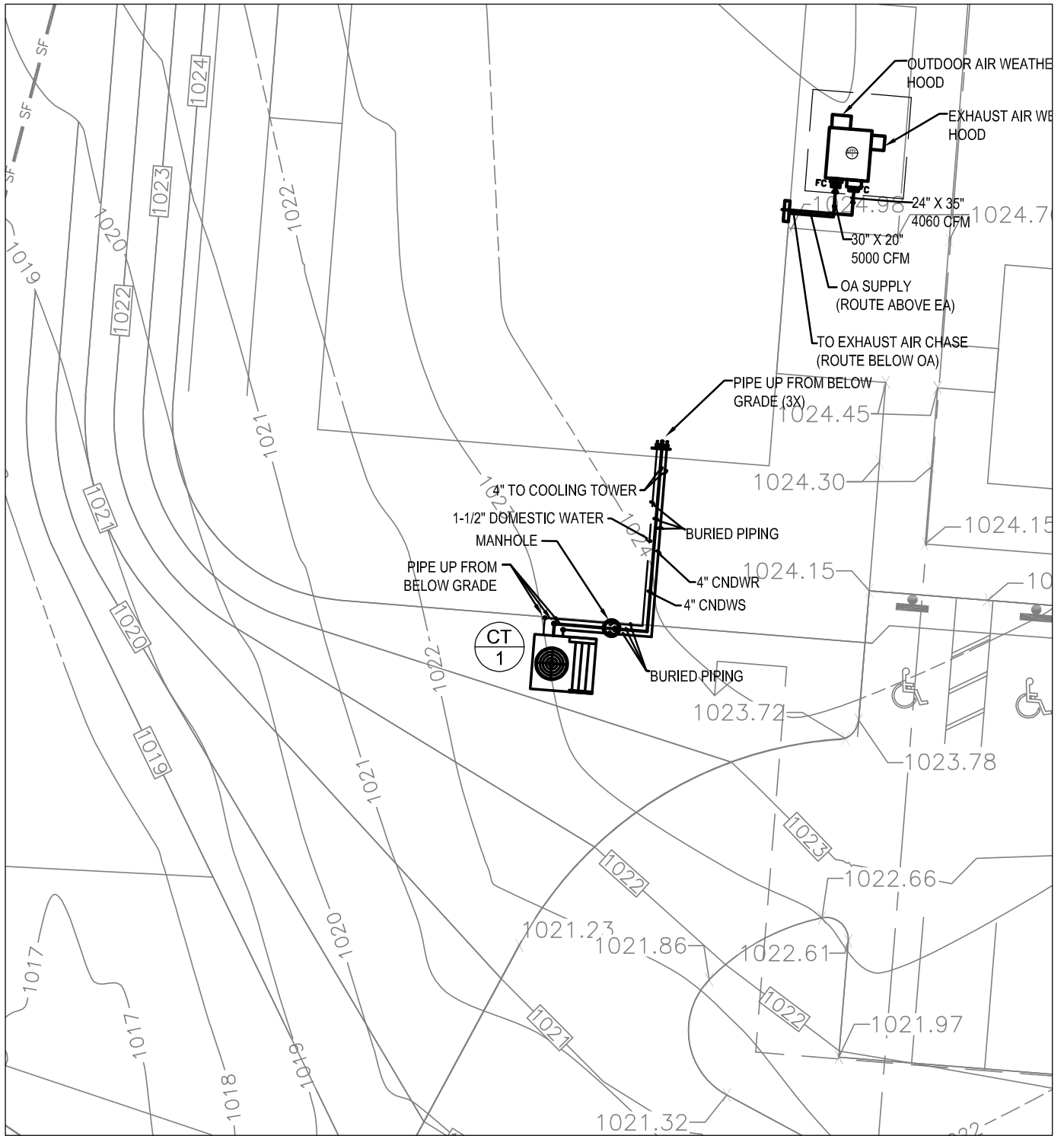
### Electrical Items:

- E1.1 Add type L1 fixture in room Mech. Clo. 139 with wall mounted toggle switch.
- E1.2 Exterior pole OLP changed to PL-SQ4 20 D 11 B ( 20ft steel pole , 11 gauge )

### Sheet Changes

- UM1.1 Refer to Sheet - UM -1:See partial plan UM-1A for changes to contour lines (numbers boxed) around Cooling Tower (CT-1). Note: Location of cooling tower does not change under Alternate #1.

END OF ADDENDUM



## TECHNICAL HORIZONS

Industrial • Commercial • Institutional

CONSULTING ENGINEERING

501 Darby Creek Road, Suite #31

Lexington, KY 40509

Phone: (859) 263-5983

## THE SEED ACADEMY

Russell Springs, KY

### MECHANICAL SITE UTILITY - PARTIAL PLAN

SHEET NO.

UM-1A

DATE  
06/12/2023

DRAWN  
ECF

CHECKED  
CME



**TECHNICAL HORIZONS PLLC**

Industrial • Commercial • Institutional

501 Darby Creek, Ste #31 Lexington, KY  
859.263.5983

June 13, 2023

## **Addendum #1 Part 2**

The Seed Academy  
Russell Springs, KY

### **Mechanical Items:**

- M2.1 Contractor to ensure hydronic heat pumps are provided with BACNet control cards for interfacing with the temperature control system.
- M2.2 Controls Contractor to monitor the On-Off operation of the MAU-1 unit for status.
- M2.3 Clarification: Discharge air controls for MAU-1 are to be packaged and included on the MAU unit from manufacturer.
- M2.4 Provide ERV-1 energy recovery unit with control relay interface for the temperature controls to send Occupied-Unoccupied signal to the ERV to operate.
- M2.5 Temperature controls Contractor to provide current sensors to monitor the operation of the two (2) fans onboard the ERV-1 unit.

END OF ADDENDUM